



NEW PRODUCTS

BRAND:



Available - NOW

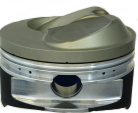
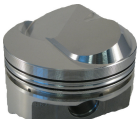
SMALL BLOCK CHEVY - RACE - Numbers with ** sold as Piston and Ring Sets Only



Part #	Category	CI	Bore	Stroke	Rod	C/H	Crown	Alloy	Ring Pack	Avail. Sizes
IC704LCAKTS**	Elite	305	3.736	3.480	5.700	1.550	1.6cc Flat Top	2618	1.2-1.2-3.0mm	.010 .020 .030 .040 .050 .060 .064
SO2733LCAK**	Elite	350	4.000	3.480	5.700	1.550	5cc Flat Top	4032	1.5-1.5-3.0mm	.005 .010 .020 .030 .040 .050 .060
IC500	Premium	350	4.000	3.480	5.700	1.550	5cc Flat Top	4032	1.5-1.5-3.0mm	.005 .030 .040 .060
IC501A	Premium	350	4.000	3.480	5.700	1.550	5cc Flat Top	4032	1.5-1.5-3.0mm	.005 .030 .040 .060
IC502	Premium	350	4.000	3.480	6.000	1.250	5cc Flat Top	4032	1.5-1.5-3.0mm	.005 .030 .040 .060
IC518LCATK**	Extreme	350	4.000	3.480	6.000	1.250	4.1cc Flat Top	4032	1.2-1.2-3.0mm	.005 .030 .040 .060
IC503	Premium	383	4.000	3.750	6.000	1.125	5cc Flat Top	4032	1.5-1.5-3.0mm	.005 .030 .040 .060

For Piston and Ring Kit add "KTS" to end of part number

BIG BLOCK CHEVY - RACE - All with .043" - 1/16" - 3/16" Ring Grooves - Available ring sets with Steel Moly Top, Napier Second and STD Tension Oil Ring - * Gas Ported



Part #	Category	CI	Bore	Stroke	Rod	C/H	Crown	W/ 119cc	Alloy	Deck Height	Avail. Sizes
IC748	Premium	509	4.500	4.000	6.135	1.645	3cc Flat Top	8.9:1	4032	9.800	STD .030 .060 .100 .110 .125
IC749	Premium	509	4.500	4.000	6.135	1.645	CC or OC -17cc Dome	10.3:1	4032	9.800	STD .030 .060 .100 .110 .125
IC516	Premium	540	4.500	4.250	6.385	1.270	CC or OC -10cc Dome	10.3:1	4032	9.800	STD .030 .060
IC512*	Premium	540	4.500	4.250	6.385	1.270	OC -36cc Dome	12.9:1	2618	9.800	STD .030 .060
IC511*	Premium	555	4.560	4.250	6.385	1.270	OC -33cc Dome	12.5:1	2618	9.800	STD .030 .060
IC510LCA*	Elite	565	4.600	4.250	6.385	1.270	OC -33cc Dome	12.9:1	2618	9.800	STD .005 .010
IC509LCA*	Elite	582	4.600	4.375	6.385	1.215	OC -40cc Dome	14.3:1	2618	9.800	STD .005 .010
IC508LCA*	Elite	598	4.600	4.500	6.700	1.245	OC -39cc Dome	14.5:1	2618	10.200	STD .005 .010
IC507LCA*	Elite	632	4.600	4.750	6.700	1.120	OC -40cc Dome	15.4:1	2618	10.200	STD .005 .010
IC514LCA*	Elite	632	4.600	4.750	6.700	1.120	OC -44cc Dome	15.8:1	2618	10.200	STD .005 .010

CC - Closed Chamber
OC - Open Chamber

For Piston and Ring Kit add "KTS" to end of part number

- A** ANODIZED Top Ring Groove and Crown
- ELITE (LCA)** ANODIZED Top Ring Groove / Crown and Abradable Skirt Coating
- EXTREME (LCAT)** ANODIZED Top Ring Groove / Crown, Abradable Skirt Coating and Top Coat

